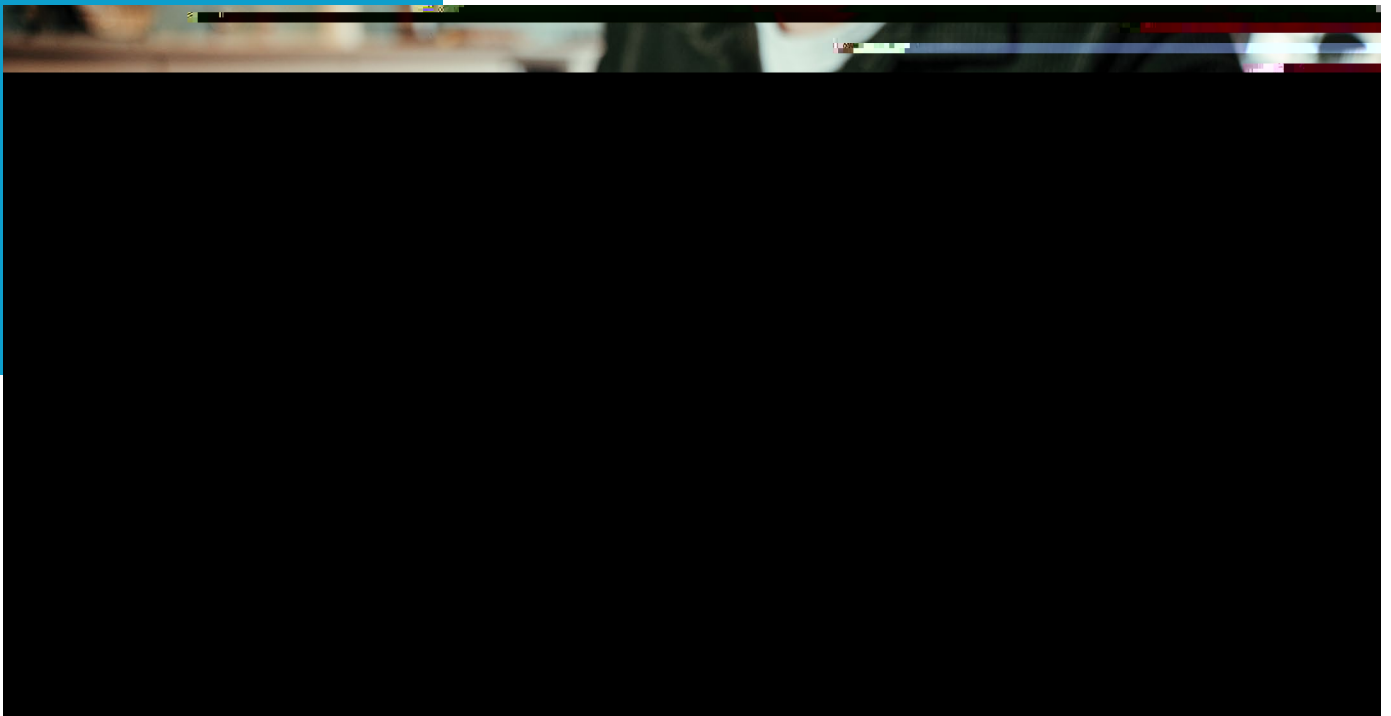


Crisis Communication for PCVE

When a crisis emerges, such as a terrorist incident, there can be a great deal of confusion and misinformation shared in the media and by the public.

At times, this level of misinformation and disinformation, combined with the fear that people have for their lives, can challenge the very foundations of social cohesion.



Practical Crisis Simulation Exercises

www.un.org/counter-terrorism-expo/#hate

The Global Programme
on Preventing & Countering
Violent Extremism (PCVE)

For more information on @V cismis

