



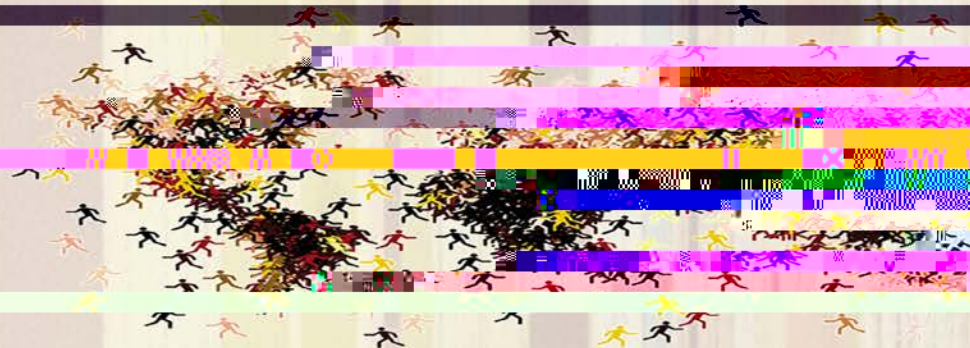
Central Agency for Public Mobilization and Statistics

Egypt-HIMS

Egypt Household International

Migration Survey 2014

Main Indicators



2015

Objectives and Scope of the Survey

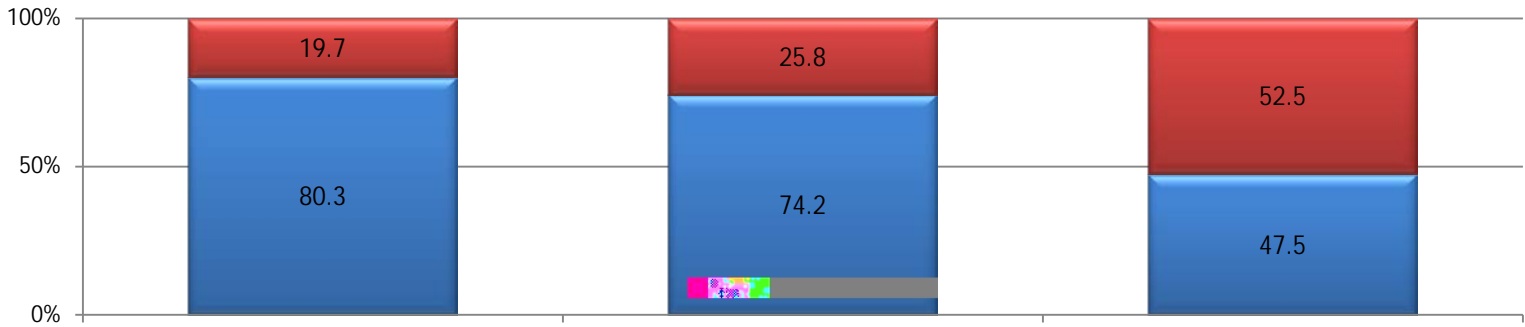
The Egypt Household International Migration Survey (Egypt-HIMS) was conducted in 2013 by the Central Agency for Public Mobilization and Statistics (CAPMAS) of the Government of the Arab Republic of Egypt. The survey was carried out as part of the 'Mediterranean Household International Migration Survey Programme' (MED-HIMS), which is a joint initiative of the European Commission /Eurostat, the World Bank, UNFPA, UNHCR, ILO, IOM and LAS, in collaboration with the National Statistical Offices of the Arab countries in the southern and eastern Mediterranean region.

The Sample

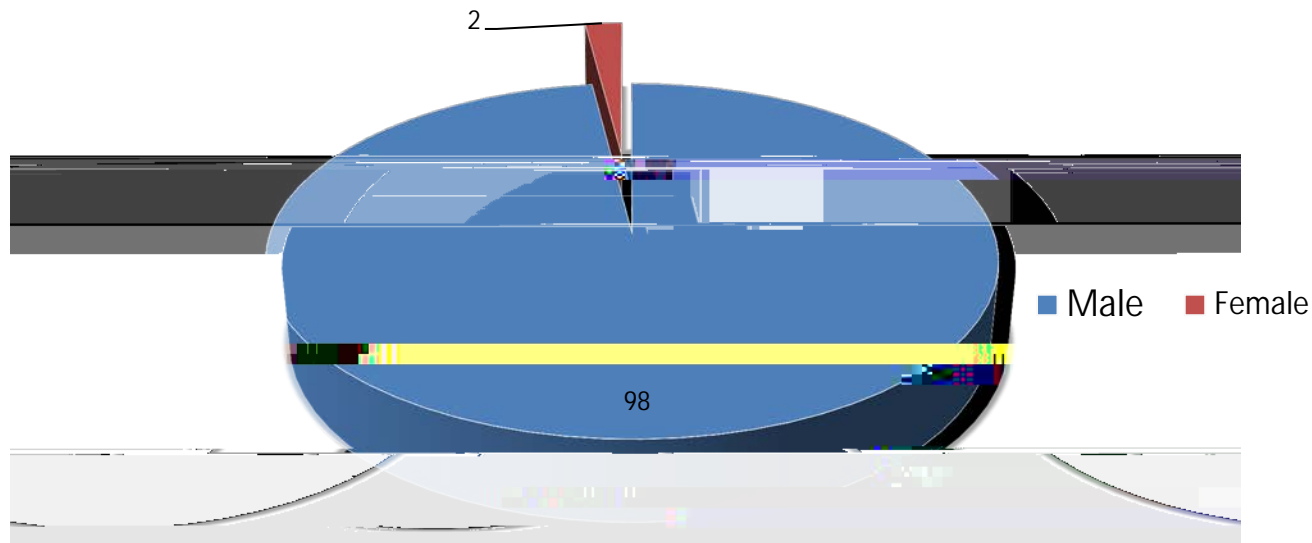
A Probability sample of 90012 households was selected for the survey, and 83741 households were found to be occupied. Interviews were successfully completed in 83358 households. Of this number, a total of 5259 households reported to having 5855 of their member residing abroad of whom 5847 were successfully interviewed, and 4695 were identified as having 5135 of their members as return migrants who returned to Egypt since 1/1/2000 of whom 5085 were successfully interviewed. The results indicate that: * 6.3% of Egyptian households are "Households with current migrants". * 5.6% of Egyptian households are households with "Return migrants".

- Characteristics of Households

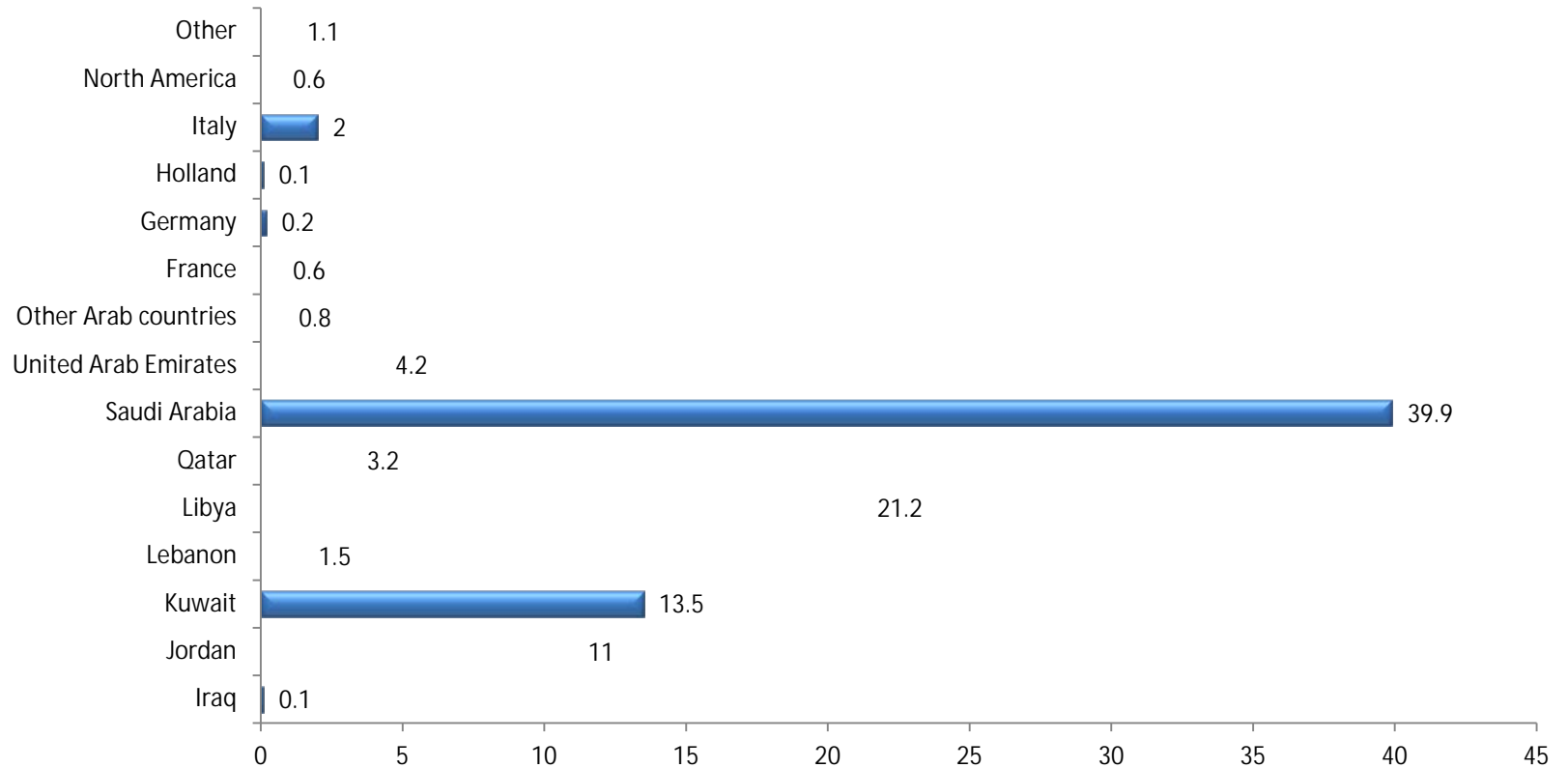
Place of residence (U/R)



1 - Current Migrants

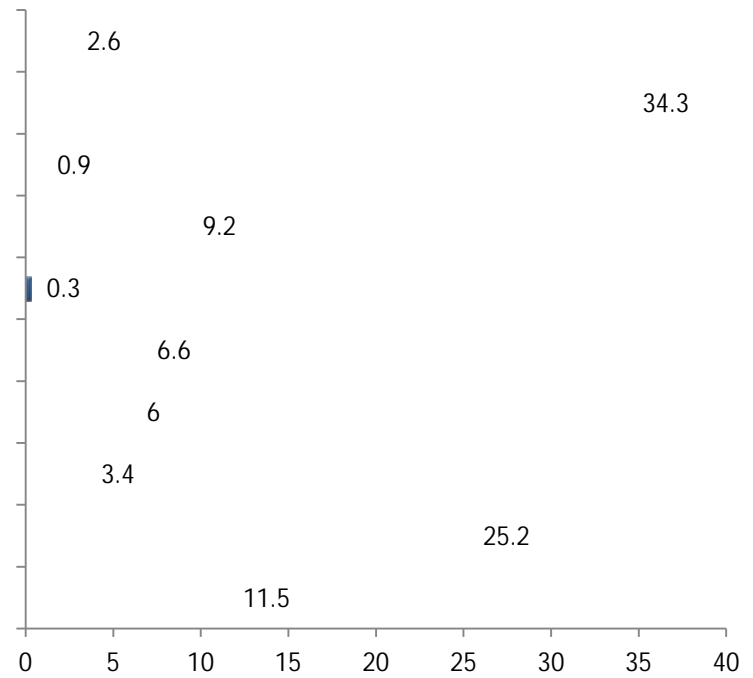


2-Current destinations



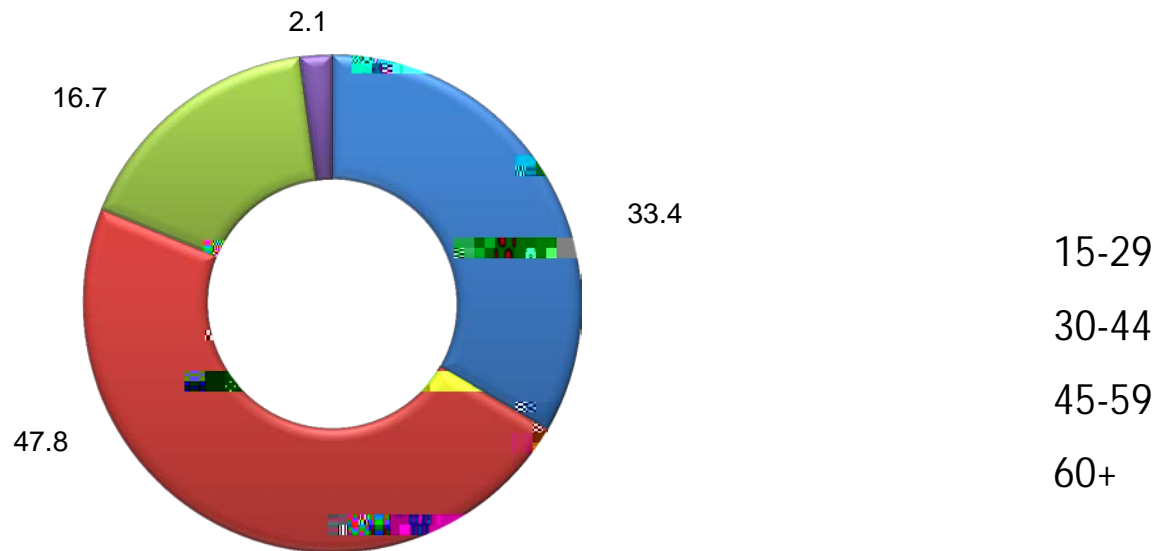
- The Arab countries stands out as the leading destination for emigrants from Egypt (95.4% of total emigrants) as follows: 39.9% in Saudi Arabia, 21% in by Libya, 14% in Kuwait, 11% in Jordan, 4% UAE, in addition to 6% in other countries
- European destinations account for 2.9% of total emigrants: 2% in Italy, 0.6% in France.
- North America account for only 0.6% % of total current migrants

3 - Motives for first migration



4 - Characteristics of Return Migrants

-Age at return:



- 48% of migrants returned to Egypt between ages 30 and 44 years), and about one-third returned before the age of 30 years. 17% of migrants returned to Egypt between ages 45 and 59 years.

-Remittances sent by return migrants:

80% of return migrants who return from Arab region & Europe remit money to Egypt within the last 12-month period before returning, compared to 41% of return migrants from North America.

-Uses of money brought back:

Distribution of the use of money brought back by return migrants(%)

