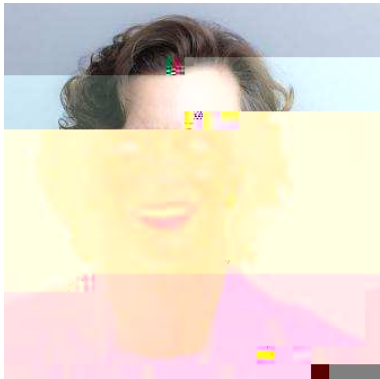




! "###\$ % &\$' \$\$\$ ( ( )

\* + " , " \*

### Introductory remarks



- " . / . 0 1 " \* " 2 4 5 )" + 3 "

Since July 2015, Michelle Nunn has been president and CEO of C" #E "\$", a leading humanitarian organization that fights global poverty and provides lifesaving assistance in emergencies. In the last fiscal year, C" #E worked in 100 countries and directly reached nearly 40 million people.

Nunn took the helm of C" #E in 2015 and is spearheading an ambitious strategy to support 200 million of the world's most vulnerable people to overcome poverty and social injustice by 2030. Under Nunn's leadership, C" #E has invested in innovative programs and partnerships with private corporations and other nonprofits to increase its impact. Since assuming leadership of C" #E, Nunn has set a goal of increasing C" #E's micro.saving program from 1 million participants to 10 million participants by 2020. Before joining C" #E, Nunn had built a career of civic and public service as a social entrepreneur, a nonprofit CEO, and a candidate for the US Senate. She co-founded the volunteer mobilization organization Hands On Atlanta and expanded it from a single entity to a national network of more than 50 affiliates. Nunn oversaw that group's merger with Points of Light, creating the world's largest organization dedicated to volunteer service, with affiliates across the globe engaged in more than 40,000 corporations and nonprofit organizations. Nunn served as Points of Light CEO from 2008 to 2011.

Michelle Nunn is a Phi Kappa Phi graduate of the University of Virginia, Nunn majored in history with a minor in religion and earned her master's degree in Public Administration from the Kennedy School of Government at Harvard University. She also received a Fulbright Fellowship to study faith and social justice in more than a dozen countries, from Peru to Namibia to Jordan. Nunn currently lives in Atlanta with her husband, Ron Martin, and their two children, Finson and Elizabeth.



and ) as the former Editor in Chief of the Barbados Magazine (She also served as President of ; her most ventures limited between 2012 and 2014 ( : she holds a master's degree in International Affairs ) with a specialty in International Economic Policy from Columbia University in New York



8; ) 7 " 2 " " - " " " , " ; " " 6 ' " , " " " " "

Isabella Pereira is the former Minister from 2010-2013 at the Brazilian Ministry of the Environment ( : during her career, ; Pereira ) as the Environmental Analyst of the Ministry of Environment from 2007-2010, the Undersecretary for the Environment, Chief of Staff, ; a leader of the Clean-up Program of the Guanabara Bay of Rio de Janeiro State, Secretary for the Environment from 2007-2008, the Deputy Minister of the Environment of Brazil from 2008-2010, the Executive Director of New

; leads Environment and : evelopment Consultancy since 2013, the Senior Fellow for Land Use and Climate Change of Brazilian Center for International Relations ACEP since 2013, the Co-Chair of the International Resource Panel A I#4=EN4 since 2013 ( ; Pereira has international expertise as the Lead of the Brazilian : elegation on negotiations of the Paris Agreement of the UN Convention on Climate Change, Member of the High-level Panel on Global Sustainability of UN's Secretary General, Member of the High-level Panel on the Post-2015 : evelopment Agenda of UN's Secretary General, key leader of Rio+20 Conference on Sustainable : evelopment, Lead of the Brazilian : elegation on negotiations of the Convention on Biological Diversity, Lead of the Brazilian : elegation on negotiations of the UN Framework Convention on Climate Change and of 118 countries Brazil, South Africa, India and China ( ; Pereira has a PhD ( : and MSc in Energy Planning from the Federal University of Rio de Janeiro (She ) as a member of the Champions of the World Award for Policy Leadership of the United Nations Environment Program from 2011-13 (She has been a member of the UN High-level Advisory Board for Economic and Social Affairs since 2010)



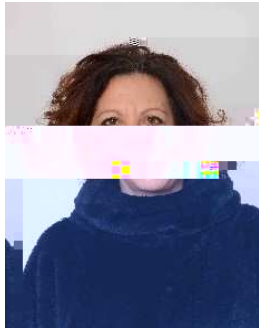
- " " " \* - " " " 0 " " - " " \* " > \* 9, : 0 \* 8 1 ' " 8 \* " \* \*\* \* " # \$ < \* 0 \* "

Until May 2017, Endah Murniningsih ) as : eputy Minister for National Resources and Environment at the Ministry of National : evelopment Planning-National : evelopment Planning Agency of the Republic of Indonesia (She ) as the Indonesian representative at the Open Working Group on Sustainable Development Goals at the UN (She has been ) working at UN Women for over 20 years in the area of natural resources, economics, and poverty, and has been a frequent lecturer at the World Agricultural Institute (She frequently speaks at international conferences on development

plans, S: 8s and poverty reduction (She is an active board member of 4erhimpunan Ekonomi  
4ertanian Indonesia @4erhepiB, and also a member of the 5on%. ; erm : e' elopment 4lannin%  
Study and Strate%ic 4lannin% ; eam of 1''44EN''S (She %raduated ) ith a 1Sc in ''%ricultural  
Economics and Social !rom 1o%or ''%ricultural Institute in 1>0F, %raduated ) ith an MSc in  
''%ricultural and #esource Economics !rom re%on State \$ni' ersity in 1>0>, and ) as a) arded a  
4h: !rom Colorado State \$ni' ersity in 2000 !or studies in ''%ricultural and #esource Economics(



Currently, #ad) an is co.oundin% a startup, 8.1eetle, ) hich aims to help !armers adapt ) ith the a!termath o! climate chan%e and sa'e ) ater( 2is main moti'e is to pro' ide people ) ith a better Juality o! li!e and help make a chan%e to) ards a prosperin% Earth( 2e aspires to become a reno) ned entrepreneur and dedicate his career to) ards sol' in% en' ironmental challen%es(



8 . " ") \* "

"ntonella Cordone has ) orked at I9": since 1>>>( She ,oined the Nutrition Social Inclusion team in July 2010( 9rom January 200\* to July 2010, "ntonella ) as responsible !or the I9": : esk o! Indi%enous 4eoples( In her current role, she has been pro' idin% technical support to operations on nutrition.sensiti'e pro,ects and social inclusion( She mana%ed the or%ani&ation o! international e' ents and re%ional trainin%s and coordinated publication o! kno) led%e products and %uidelines( She is been mana%in% se' eral %rants ) ith research Centers and \$ni' ersities and most recently mana%in% the \$\$: D/ million N #": pro,ect to mainstream nutrition at I9": (

In her pre' ious !unction as Senior ; echnical Specialist, Indi%enous 4eoples, she led on the appro' al o! the I9": 4olicy on En%a%ement ) ith I4s @200>B, and its implementation( She established the Indi%enous 4eoples 9orum at I9": in 2011, a uniJue 9orum solidly institutional&in% I9": :s dialo%ue ) ith I4s( She established and mana%ed the I9": multi.country Indi%enous 4eoples "ssistance 9acility @4"9B, a dedicated !acility !inancin% small pro,ects directly to I4s+ communities and their or%ani&ations( She de' eloped a 2o) to do Note on seekin% 9ree, 4rior and In!ormed Consent in I9": .!unded pro,ects, and represented I9": in international processes, !ora and conferences and lectured in se' eral Italian \$ni' ersities(

Cordone holds a master+s de%ree in international cooperation and pro,ect desi%n and a master+s de%ree in !orei%n literature and lan%ua%es !rom the \$ni' ersity o! #ome 5a Sapien&a @cum laudeB( She speciali&ed in social inclusion and participatory approaches @4#"=45"=B in rural communities( She !eels pri' ile%ed to ha'e had the opportunity to do a ,ob that she considers a mission and that combines her pro!essional skills ) ith her ' alues to contribute to reduce po' erty, ineJualities and malnutrition, ) hich she considers %reat in,ustice !or humanity(