



Speakers' Biographies

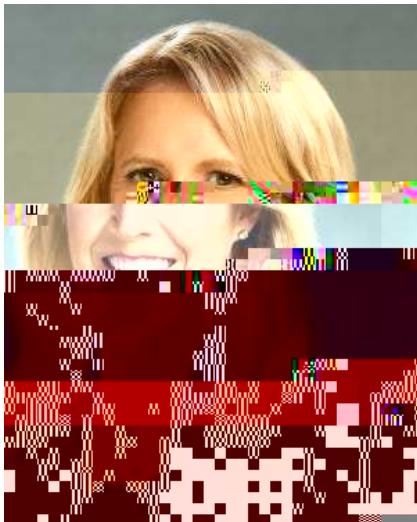
Imagining the Carbon-neutral Future: Transformations in Energy and Transport

Building a Global Coalition for Sustainability after C O P 2 7

un%il) o' em-er 200=. As Direc%or, s e /as responsi-le "or % e prepara%ion o" s%ructure and local plans and /as direc%ly in' ol' ed in % e de' elopmen%mana, emen%o" +enan, 6i%3s protec% and landscape. ! e also led a %eam / ic planned and implemen%ed ur-an rene/al pro?ec% in . eor, e To/n. In) o' em-er 200=, as i% . eneral Mana, er, Ms. ! ari" es%a-lis ed . eor, e To/n World *eri%a, e Incorpora%ed and mana, ed % e . eor, e To/n World *eri%a, e !i%e, / ic /as inscri-ed -y () E!61 in July 2008.

; orn in Kuala +ila ,) e, eri !em-ilan, Malaysia, on 2@ Au, us%1=@1, Ms. ! ari" olds a ;ac elor o" !cience /i% *onours in To/n +lannin, !%udies "rom % e (ni' ersi%y o" Wales Tns%u%e o" !cience and Tec nolo,y, (5 and a Mas%er o" !cience in +lannin, !%udies "rom % e Malaysia !cience (ni' ersi%y. ! e as recei' ed se'eral a/ards, includin , , 8+lanner o" T e Aear 201B9 -y % e Malaysian Tns%u%e o" +lanners, % e 201@ . lo-al *uman !e%emen% 1u%&andin, 6on%ri-u%ion A/ard durin, *a-i%a%!!! in Cui%o, "or er con%ri-u%ion in sus%aina-le plannin, in !e-eran, +erai and "rom % e +enan, !%a%e . o' ernmen% 1n 11 2anuary 2018, s e recei' ed an a/ard "rom % e Malaysia ;ook o" :ecords reco, niDin, er "or -ein, % e "irs%Asian /oman % o -e appoin%ed as E&ecu%i' e Direc%or o" () -*a-i%a% ! e is married %o Mr. Adli <ai and as %/o dau, %ers.

Seyno%e remarks



Ms. 5ris%en !iemen

5ris%en !iemen /as appoin%ed 'ice presiden%o" !us%aina-le Workplaces and 6 ie" !us%aina-ili%y 1""icer o" . eneral Mo%ors in Ee-ruary 2021. ! e /ill elp lead . eneral Mo%ors %o a "u%ure /i% Dero emissions as % e company con%inues %o %ake -old ac%ions a, ains%clima%e c an, e, includin , . M3s commi%men%o -ecome car-on neu%ral in i%e produc% and opera%ions -y 20B0.

In er mos%recen%role as e&ecu%i' e direc%or, . lo-al Ener, y !%ra%e, y, 6er%ica%ion, 6ompliance and Tes%<a-s, !iemen led a cross-"unc%ional leaders ip %eam responsi-le "or se%in, corpora%e ener, y s%ra%e, ies, includin , % e in%roduc%ion o" "uel economy impro' emen%ec nolo, ies as /ell as ini%ia%i' es ali, ned /i% . M3s 'ision o" a Dero-emissions "u%ure. !iemen /orked closely /i% % e !us%aina-ili%y 1""ice %o de' elop . M3s aspira%ion %o elimina%e all %ailpipe emissions "rom ne/ li, %du%y 'e icles -y 203> as /ell as % e de' elopmen%o" % e company3s science-ased %ar, e%e.

In addi%ion %o er accomplis ed %ec nical career, !iemen is also passiona%e a-ou%promo%in, inclusion and , ender e4uali%y. ! e /as ins%rumental in crea%in, . M3s career reen%ry pro, ram, 8Take 2,9 ser' es as . M3s key e&ecu%i' e "or % e !ocie%y o" Women En, ineers and is % e

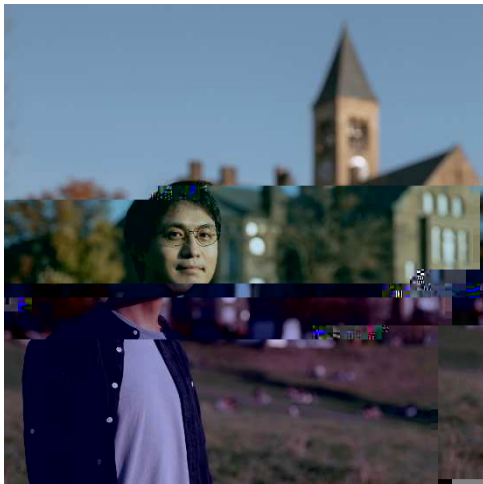
co-lead "or % e . M Women Ally +ro, ram. *er /ork %o impro' e policies and prac%ices e""ec%in, c an, e "or /omen earned er % e)ational Associa%ion "or Eemale E&ecu%i' es Women o" Excellence Ac%i' is% A/ard. !iemen also ser' es on % e ; oard o" Ad' isors "or 6a%alys%and % e 1akland (ni' ersi%y !c ool o" En, ineerin, F 6ompu%er !cience Ad' isory ; oard, / ere s e recei' ed -o% er -ac elor%s and mas%er%s de, rees in Elec%rical En, ineerin, . A na%i' e o" Warren, Mic i, an, s e , re/ up around % e au%omo%i' e indus%ry /i% er "a% er, , rand"a% er and , randmo% er all /orkin, in % e "ield.

Modera%or

Mr. 2eremy <o' ell

2eremy <o' ell as -een a repor%er "or some B> years, o" / ic more % an al" /as spen%/i% % e : eu%ers ne/s a, ency in ' arious par%o" Europe, A"rica and Asia and /i% en' ironmen%and clima%e c an, e a recurren%opic % rou, ou% % a%ime G "rom pollu%ion %o a-i%a%and species loss, po' er%, popula%ion, eal% , educa%ion, %ranspor% ener, y and li"es%yle c oices # "or % ose lucky enou, %o a' e % em\$ G -u%-ecomin, increasin, ly dominan%in % e pas%20 years or so as % e p ysical and scien%i'ic e' idence -ecame incon%ro' er%i' -le. *e also spen%nearly a decade edi%in, "or % e +la% % ener, y ne/s a, ency and, earlier % is cen%ury, a year elpin, % e () E666 %rainin, repor%ers "rom de' elopin, coun%ries co' er % e comple& and, a%ime% , -e/ilderin, in%erna%ional ne, o%i'a%ions around clima%e c an, e.

Discussion 1: !mar%+olicies "or Ena-lin, Ener, y Al%erna%i' es



Mr. Hian, kun #El' is\$ 6ao

[Hian, kun #El' is\\$ 6ao](#) is a + .D. 6andida%e /orkin, on car-on con' ersion in % e !i-ley !c ool o" Mec anical and Aerospace En, ineerin, a%6ornell (ni' ersi%y, and an incomin, +os%doc%oral Associa%e /orkin, on car-on capture in % e Depar%men%o" 6 emical En, ineerin, a% % e Massac use% %ns%i'u%e o" Tec nolo, y. *is + .D. researc on *7-<i, % a scala-le solar reac%or %ec nolo, y "or con' er%in, 612 in%o "uels, recei' ed % e !205 . rand +riDe #1J1,1>0\$ in % e 86rea%e % e Eu%ure9 Desi, n 6on%es% #2010\$, and /as "ea%ured in % e World Economic Eorum% / i%e paper as an ener, y -reak% rou, o" % e pas%

decade #2020\$. *e co-"ounded [62H](#) %o reima, ine 612 emissions as an ener, y resource % rou, policy en, a, emen%and you% empo/ermen% and [Food2H](#) %o di' er%"ood /as%e "rom land"ills "or e""icien%-io, as produc%ion. Eor is /ork in % e sus%aina-ili%y sec%or, El' is is selec%ed as a

member of the Technical Working Group on Energy Transitions -y % e (nited) a%ions #2021\$, a
.erman 6 ancillor Eello/ -y % e *um-old%Eounda%ion #2021\$, a Aoun, !cien%is%-y <indau
)o-el Mee%in, s #2020\$, a () 76EE Aoun, 6 an, emaker on !us%aina-le WA! * !olu%ions #2020\$,
and a Eor-es 30 (nder 30 in Ener, y *onoree "or)or% America -y Eor-es Ma, aDine #201=\$,
amon, o% ers.

Mr. Adekoye?o 5uye

Adekoye?o 5uye is +ro?ec%<ead a%ManamuD Elec%ric <TD in
)i,eria. T ere, e elps -uild clean, sus%aina-le ener, y sys%ems
"or omes, -usinesses and communi%ies, -y desi, n and
deploymen%o" e""icien%elec%rical en, ineerin, solu%ions. *e is
also % e /inner o" % e 2021 !E"orA<< Aou% !ummi%
8Trou-les oo%in, "or !D. 09 7nno'a%ion con%es%

: ead is -lo, pos%"or () DE!A on 8cool solu%ions %o A"rica3s
-urnin, pro-blems9 [ere](#).

Ms. ;a are !eye%
4 TL

Mr. Sande Aumkella

Ms. Stephanie Arnold

Stephanie Arnold is an Associate Specialist in the Urban Mobility Team at the American Planning Association. She is trained in urban planning, and has been working, on sustainable mobility projects for more than 10 years, providing technical advice, knowledge and leadership to governments around the world. In her work, she supports road consultation processes to make older people develop mobility strategies that are adapted to local needs, and is also involved in international expertise and best practices, and is also involved in capacity building, training, events and city-to-city exchange. She has previously worked in an urban development project. She is a passionate cyclist and regularly participates in 100 mile triathlons or Gravel Mass Events to create awareness of pedestrians and cyclists, and to speed up urban roads.

Mr. Daniel LaD

Daniel LaD is an Economic Affairs Officer in the Economic and Sustainable Development Office of the United Nations Department of Economic and Social Affairs, where he currently leads the technical assistance and capacity development work on infrastructure assessment, monitoring of local and national governments in development countries. He has over 20 years of experience in international processes, research and analytics and technical assistance in support of the implementation of the Sustainable Development Goals. He has published widely in the area of development finance, municipal finance and infrastructure finance. Mr. LaD holds a Ph.D. in Economics from the University of California, Berkeley. He can be reached at +1 415 949 2333 or +1 415 949 2364.

Ms. Salpana Mis/ana%

Salpana Mis/ana% is a researcher and practitioner on ,ender
inclusive ur-anisa%ion. ! e is % e co-"ounder and 6E1 o"

Mrs. 1, un-iyi is one o" % e 6ommissioners "or % e . lo-al 6ommission %o end ener, y po'er% / ic is an ini%ia%i' e dri'en -y Massac use%% 7ns%u%e o" Tec nolo, y #MTT\$ and T e :ocke"eller Eounda%on. ! e is % e 6o-6 air o" % e 61+2@ Ener, y Transi%on 6ouncil aimed a% dri' in, ac%ion %o accelera%e % e s i"%o clean ener, y a ead o" 61+2@ and %o -rin, %o, e% er leaders in % e po/er sec%or across poli%ics, "inance and %ec nolo, y %o speed up % e %ransi%on "rom coal %o clean rene/a-le ener, y in de' elopin, coun%ries. ! e is also a mem-er o" % e De' elopmen% Ad' isory 6ouncil o" % e (.!. 7n%erna%ional De' elopmen% Eainance 6orpora%ion #DE6\$, mem-er o" % e clean cookin, alliance ad' isory -oard and a mem-er o" % e Ad' isory ; oard o" % e (ni'ersi%y o" 1&"ord K Eu%ure o" 6oolin, +ro, ramme